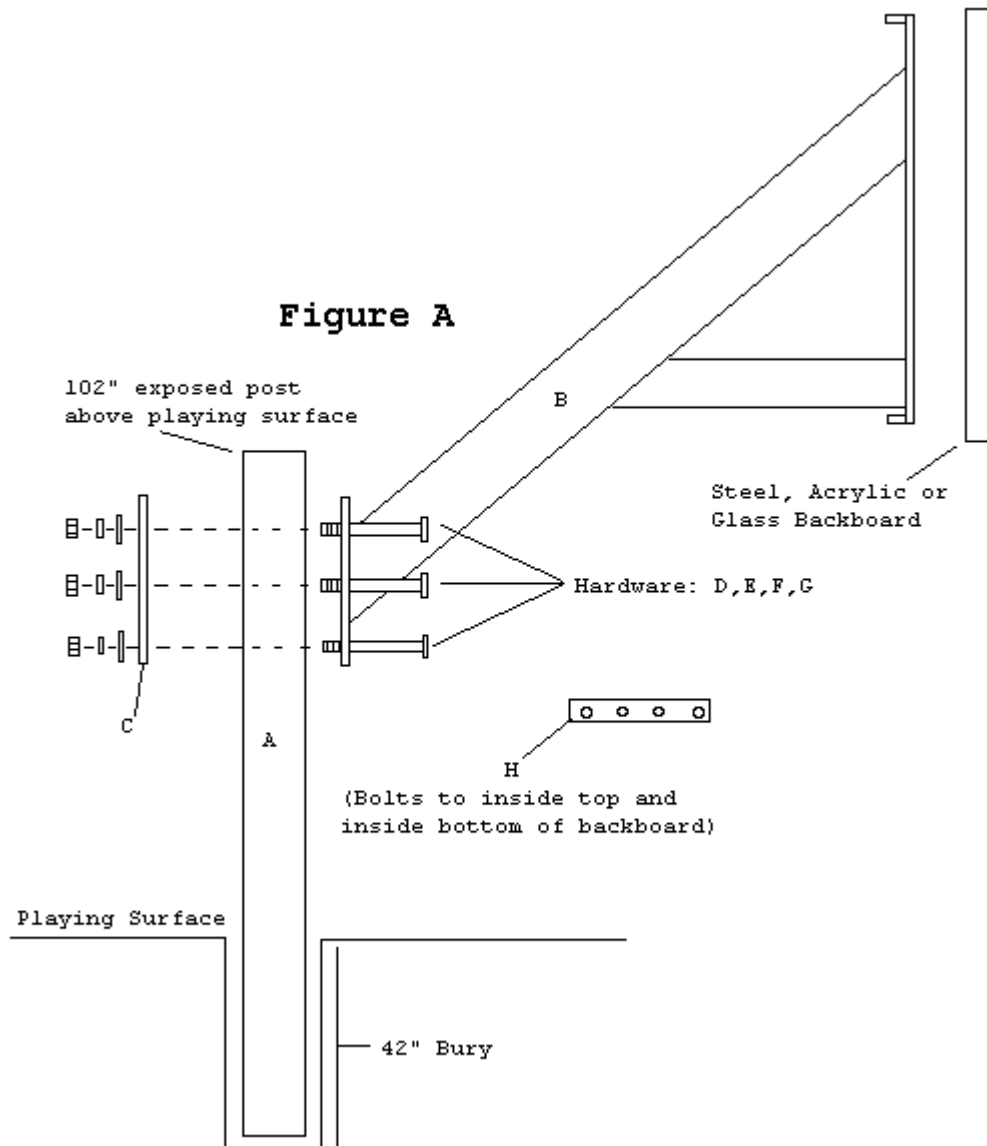


# FIRST TEAM SPORTS, INC

## Legend Jr. Series Assembly Instructions



### Bill of Materials

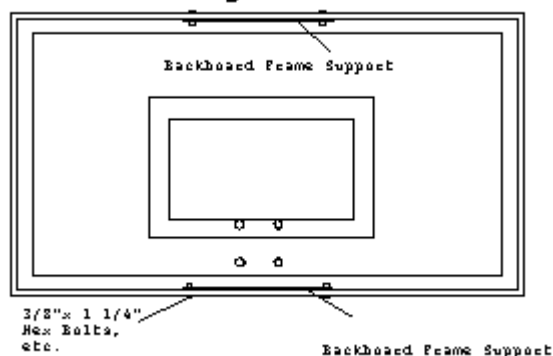
A (1) Vertical Post	E (6) 5/8" Hex Nut	I (8) 3/8"x 1 1/4" Hex Bolt
B (1) 45 Degree Extension Arm	F (6) 5/8" Flatwasher	J (8) 3/8" Flatwasher
C (1) Mounting Plate	G (6) 5/8" Lockwasher	K (8) 3/8" Lockwasher
D (6) 5/8"x 7" Hex Bolt	H (2) Backboard Frame Support	L (8) 3/8" Hex Nut

**NOTE: Immediately unpack all components and cross check against bill of materials. Report any shortages to First Team customer service at 1-888-884-6677.**

1. Position the hole taking into consideration that the backboard will be approximately 52" from the front of the vertical post.

2. Dig a hole 18" in diameter and 42" deep.
3. Install post in wet concrete with capped end up. Be sure that at least 102" of post extends above the playing surface to insure adjustment to ten feet. Make sure post is installed straight and plumb, brace if necessary while cement cures.
4. After allowing 48 hours drying time for the concrete, mount the 45 degree extension arm as shown. Arm can be mounted loosely at ground level and slid up the pole or mounted at correct height depending on lifting equipment available. Use hardware D,E,F,G (See Figure A) Note: For rim to be positioned at 10' the bottom of the extension arm plate should be bolted approximately 86 ½" up the vertical post.
5. Loosely attach both backboard frame supports (part H) to the inside top and bottom of your backboard using the 3/8" hex bolts, etc. as shown in figure B. If you are mounting an acrylic backboard you will have to remove and discard the plastic shipping strap located at the backboard joint. Note: for this step only attach the backboard frame support using the two outermost holes. Do not bolt the support at the center two holes! ATTENTION: If your backboard is tempered glass check to make sure all four steel grommets are located in the rim holes, if any are missing look in the box. If grommets are missing and cannot be located DO NOT proceed with assembly, call First Team immediately.
6. Next, lift and slide backboard onto extension arm aligning the attachment holes at the top and bottom of extension arm with the holes in the backboard frame. If you are attaching an acrylic backboard make sure to sandwich one rubber gasket (included with the backboard) between the extension arm faceplate and the back of the backboard where the rim bolts go through.
7. Bolt backboard to extension arm at all points along the top and bottom using the remaining 3/8"x 1 ¼" hex bolts, etc. Make sure rim hole pattern in the extension arm faceplate lines up with the rim hole pattern in the backboard, then tighten all 3/8" hardware.
8. Attach rim using the hardware provided in the rim box. Level rim with backboard, tighten rim hardware and attach net. If you are mounting an acrylic backboard, don't forget to sandwich the other rubber gasket between the backplate of the rim and the face of the backboard.

**Figure B**



**FIRST TEAM SPORTS, INC.  
 902 COREY ROAD  
 HUTCHINSON, KS 67501  
 TOLL FREE: 888-884-6677**